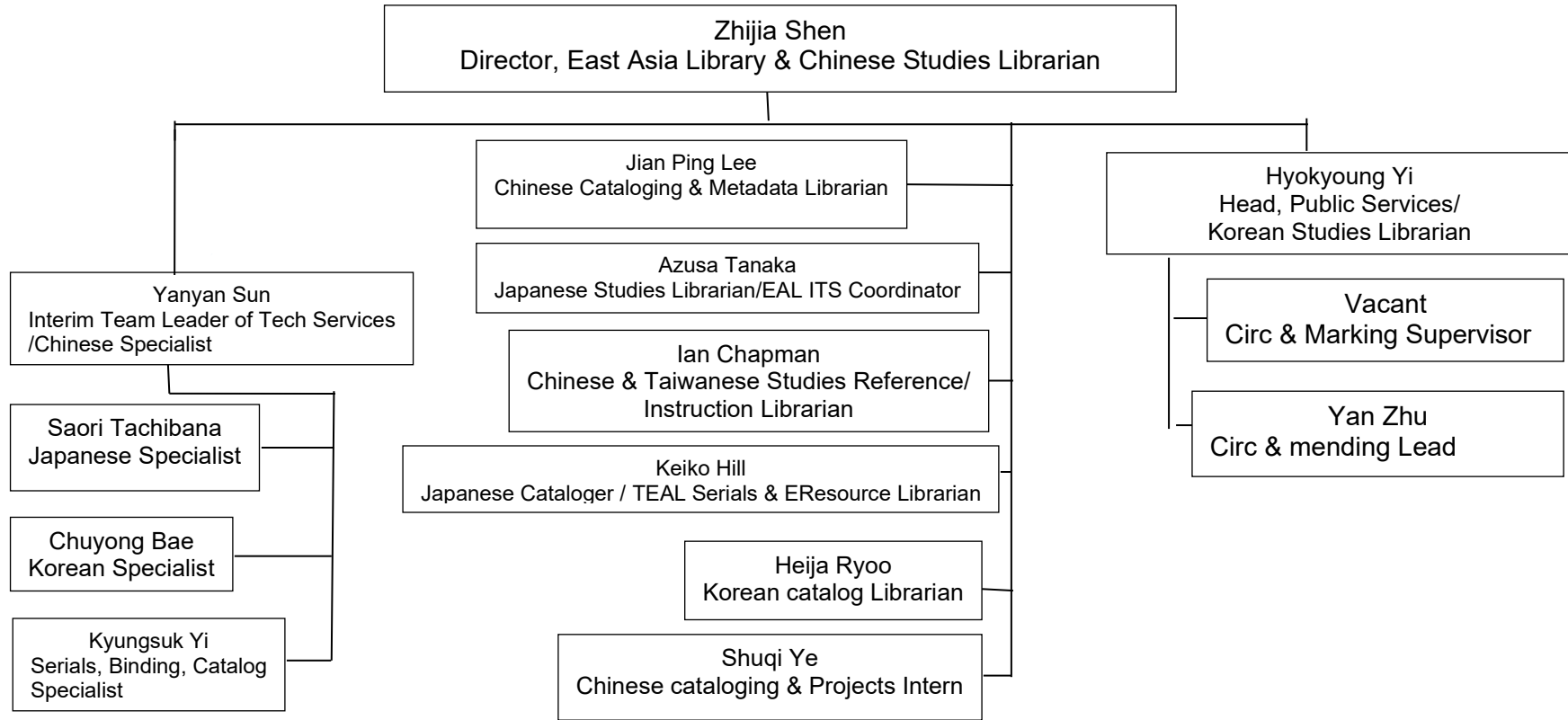


Tateuchi East Asia Library Organizational Chart



NOTES:

The following positions provide supplementary review letters or comments to the listed positions:

Keiko Hill, Japanese cataloger/ TEAL Serials & e-Resources Librarian

Serials/ Binding/ cataloging specialist; Circulations/markings supervisor

Jian Ping Lee

Chinese Acquisitions and Quick Cataloging Specialist; Serials/ Binding/ Catalog Specialist

Heija Ryoo, Korean cataloger

Korean Acquisitions and Quick Cataloging Specialist; Serials/Binding/ Catalog Specialist;

Azusa Tanaka, Japanese Studies Librarian/EAL ITS Coordinator

Japanese Acquisitions and Quick Cataloging Specialist; Japanese cataloger/serials & eResources librarian

Hyokyoung Yi, Head of Public Services/Korean Studies Librarian

Korean Acquisitions and Quick Cataloging Specialist; all librarians & staff participating in public services